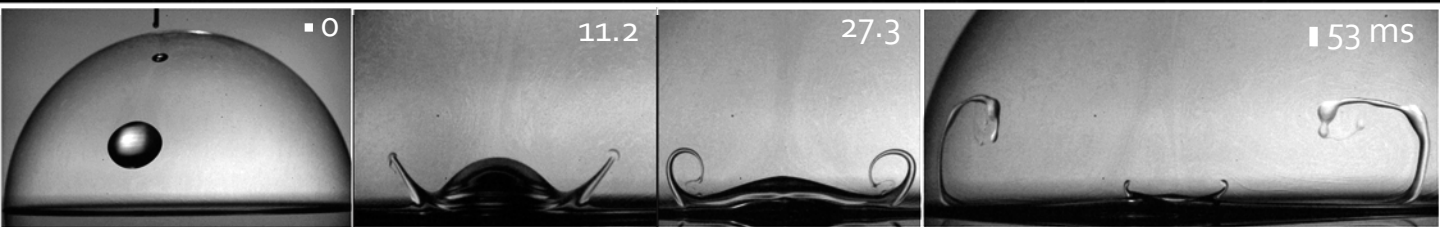
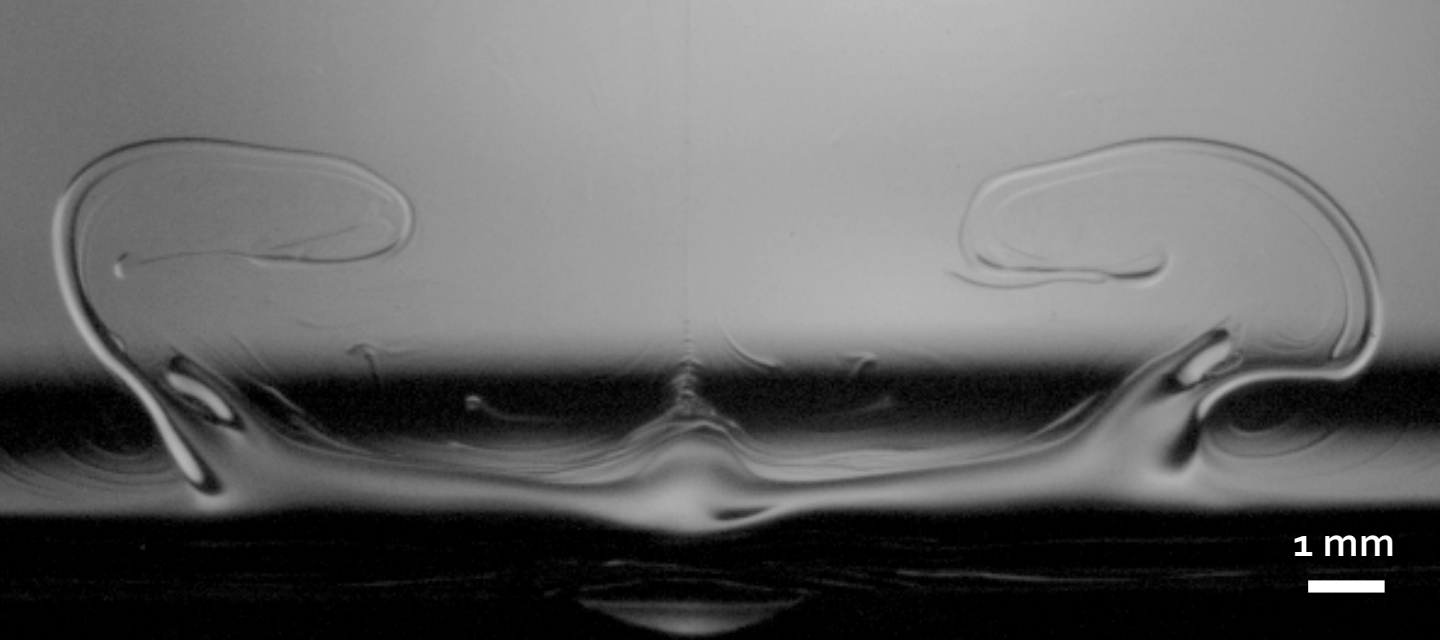


# 2D DROP SPLASH

Abdullah Al Hareth<sup>1,2</sup>, Ziqiang Yang<sup>1</sup>, Sigurdur T. Thoroddsen<sup>1</sup>

<sup>1</sup> Division of Physical Science and Engineering, King Abdullah University of Science and Technology

<sup>2</sup> Center of Excellence for Aeronautics and Astronautics, King Abdulaziz City for Science and Technology



The high-speed impact of a drop on a pool is symbolized by the ejecta sheet emerging from the neck connecting the two<sup>1,2</sup>. Here we show that a similar ejecta forms when a 2-D drop impacts on a shallow film. This is realized by a flat miscible drop free-falling within a thin soap-film and hitting its thicker bottom boundary, which acts as the pool. The ejecta comes from the drop liquid and evolves into intricate forms which remain close to left-right symmetric.

## Reference

[1] Thoroddsen, S.T., 2002. The ejecta sheet generated by the impact of a drop. *Journal of Fluid Mechanics*, 451, pp.373-381.

[2] Thoroddsen, S.T., 2012. The making of a splash. *Journal of fluid mechanics*, 690, pp.1-4.

✉ [abdullah.alhareth@kaust.edu.sa](mailto:abdullah.alhareth@kaust.edu.sa)

☎ +966 55 913 3499

🌐 [highspeedfluids.kaust.edu.sa](http://highspeedfluids.kaust.edu.sa)

High-Speed Fluids  
Imaging Laboratory