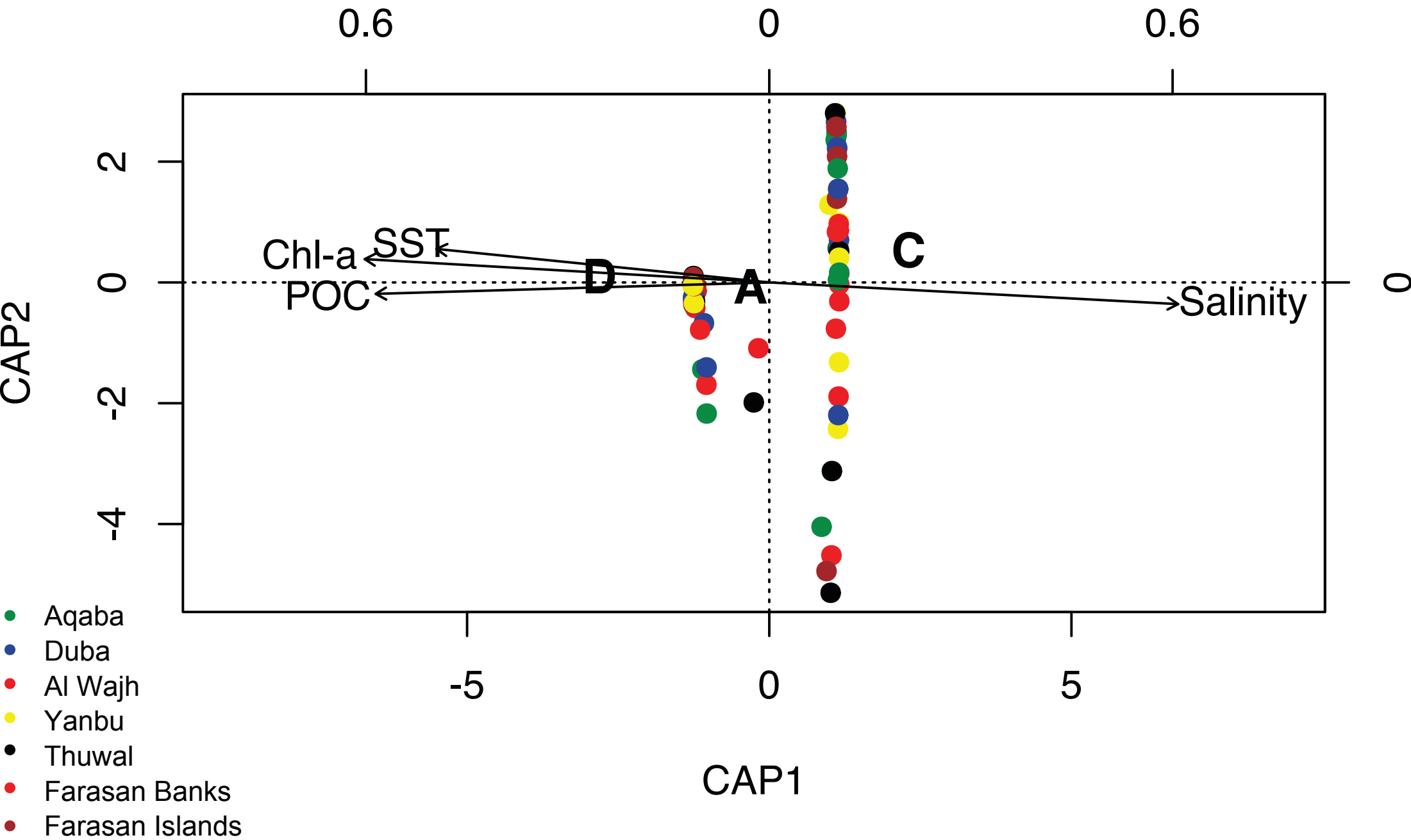


**Environmental latitudinal gradients and host specificity shape
Symbiodiniaceae distribution in Red Sea *Porites* corals**

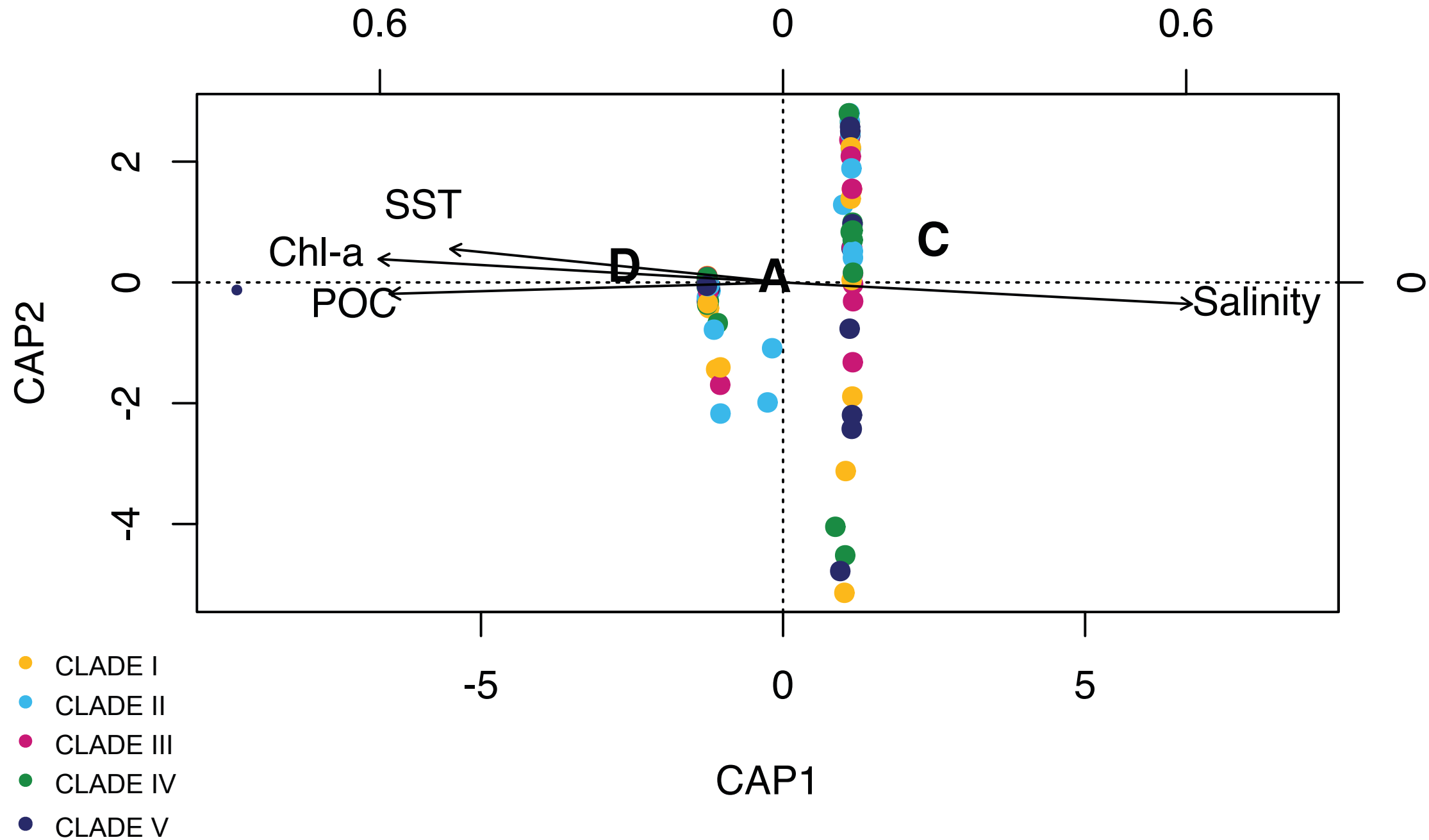
Tullia I. Terraneo, Marco Fusi, Benjamin C. C. Hume, Roberto Arrigoni, Christian R. Voolstra, Francesca Benzoni, Zac H. Forsman, Michael L. Berumen

Appendix S4 Bi-plot CAP ordination of *Porites* (divided for location, molecular clades and morphological species) and Symbiodiniaceae clade (a-c), majority ITS2 sequence (d-f) and ITS2 type profiles (g-i) in relation with the four environmental variables studied

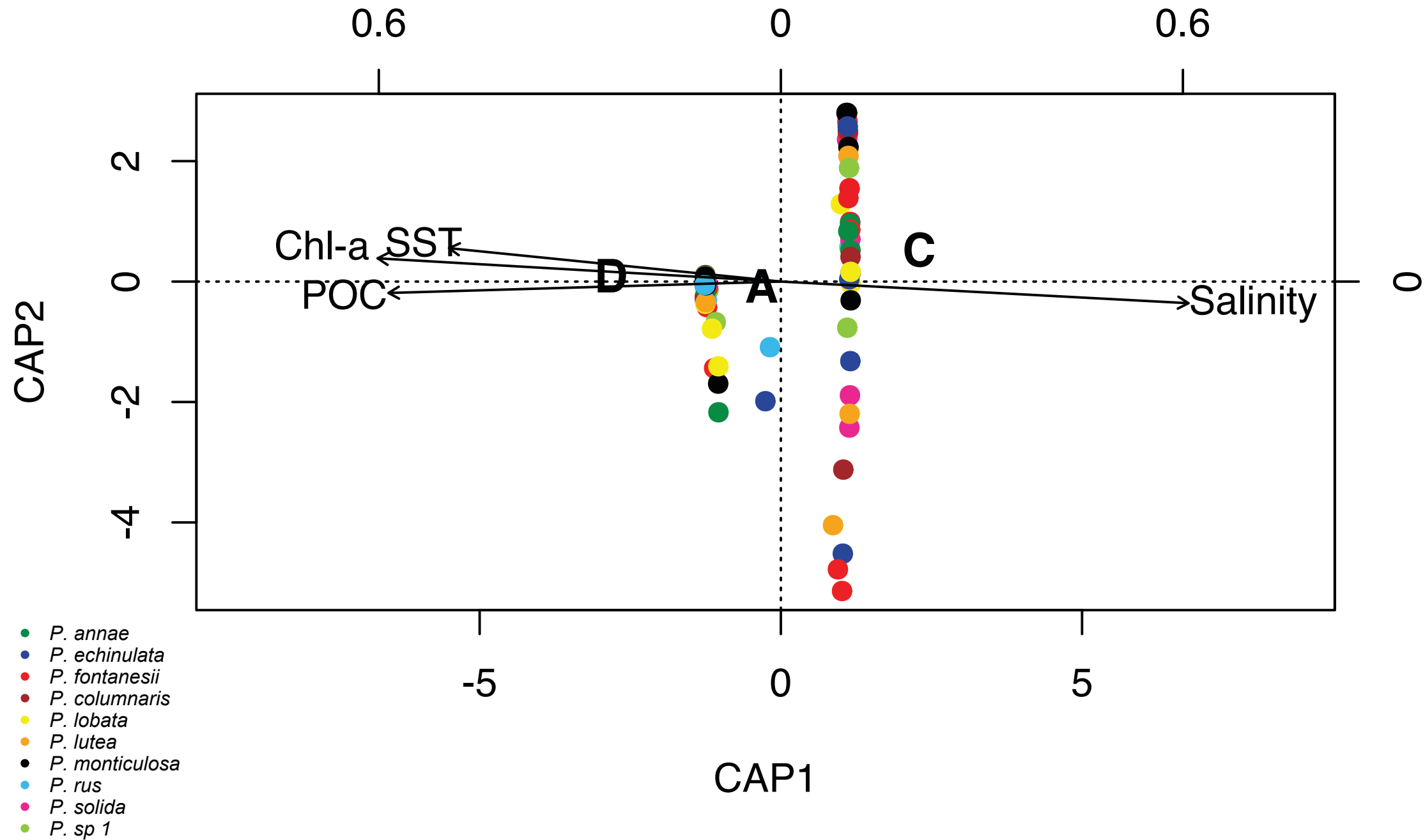
(a) Symbiodiniaceae clade - locality



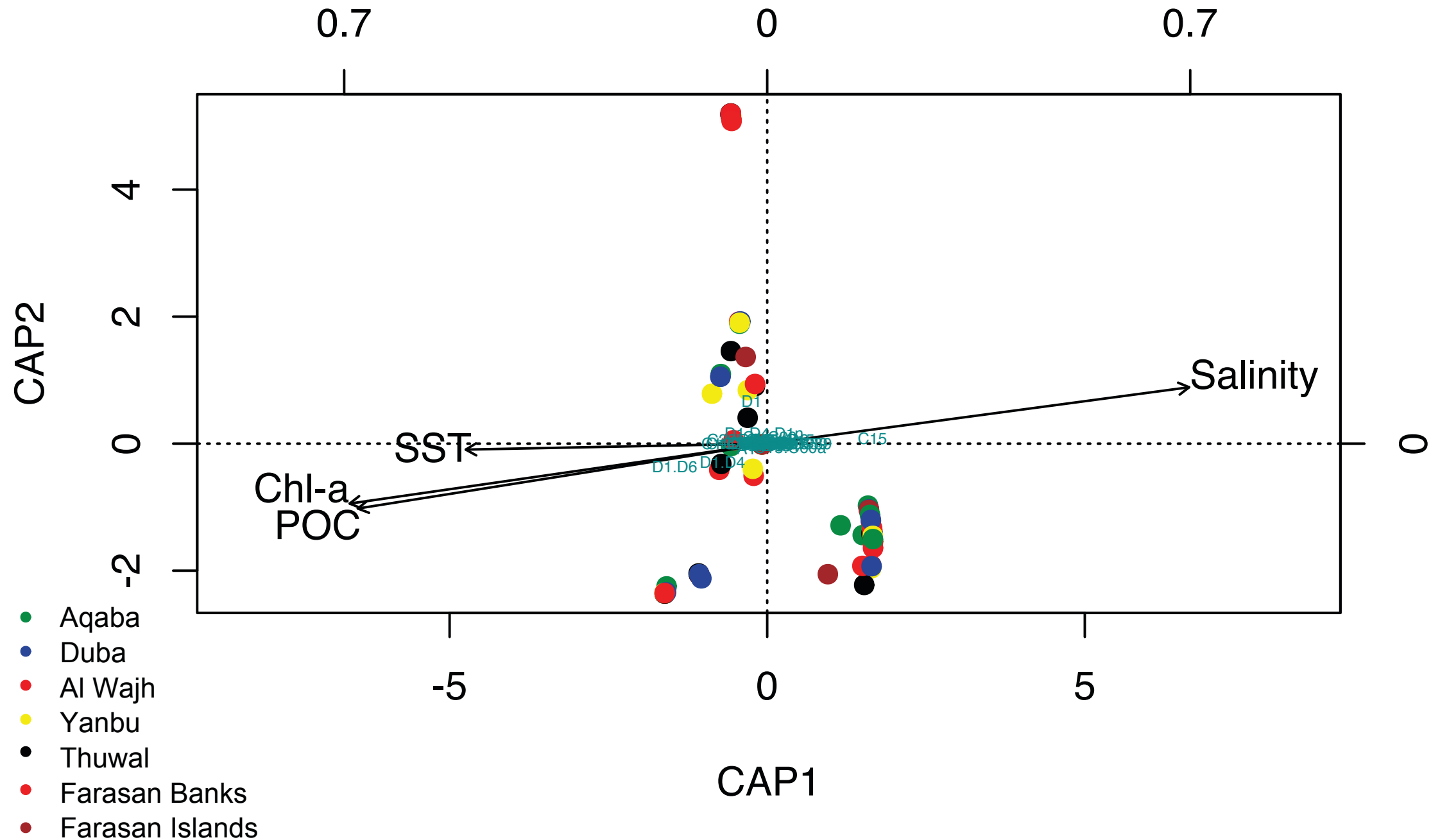
(b) Symbiodiniaceae clade - *Porites* molecular clade



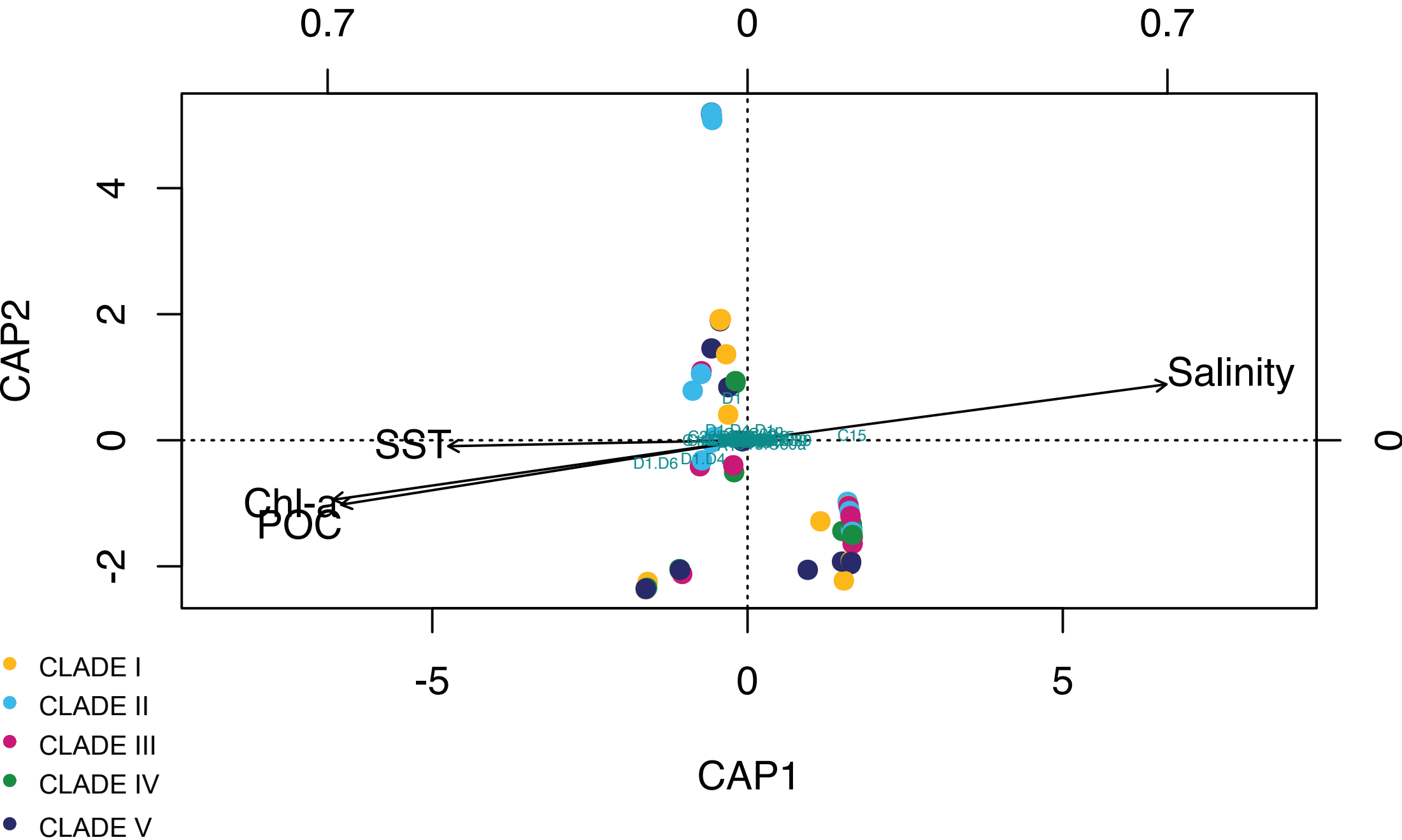
(c) Symbiodiniaceae clade - *Porites* morphological species



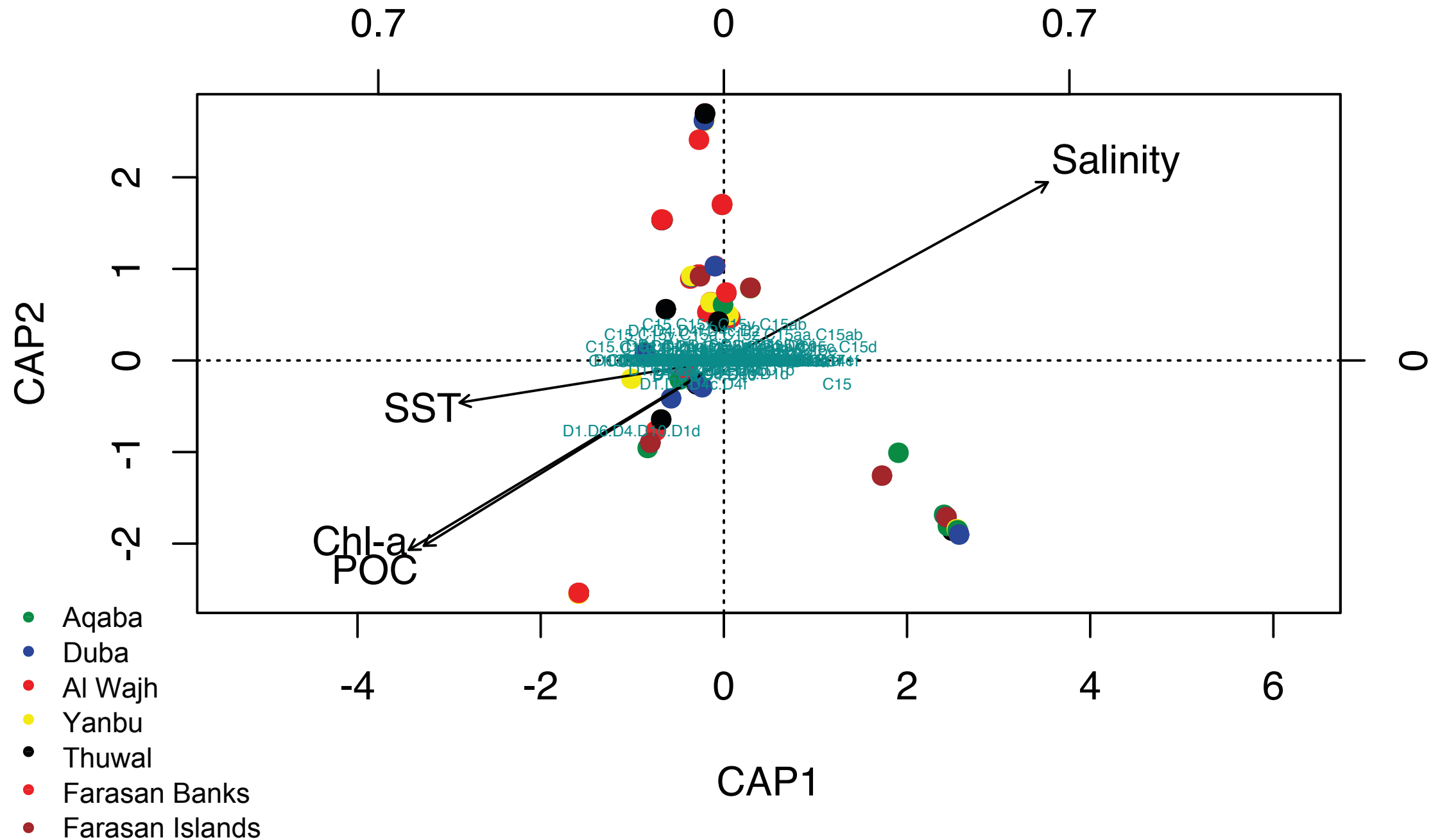
(d) Symbiodiniaceae majority ITS2 seq - locality



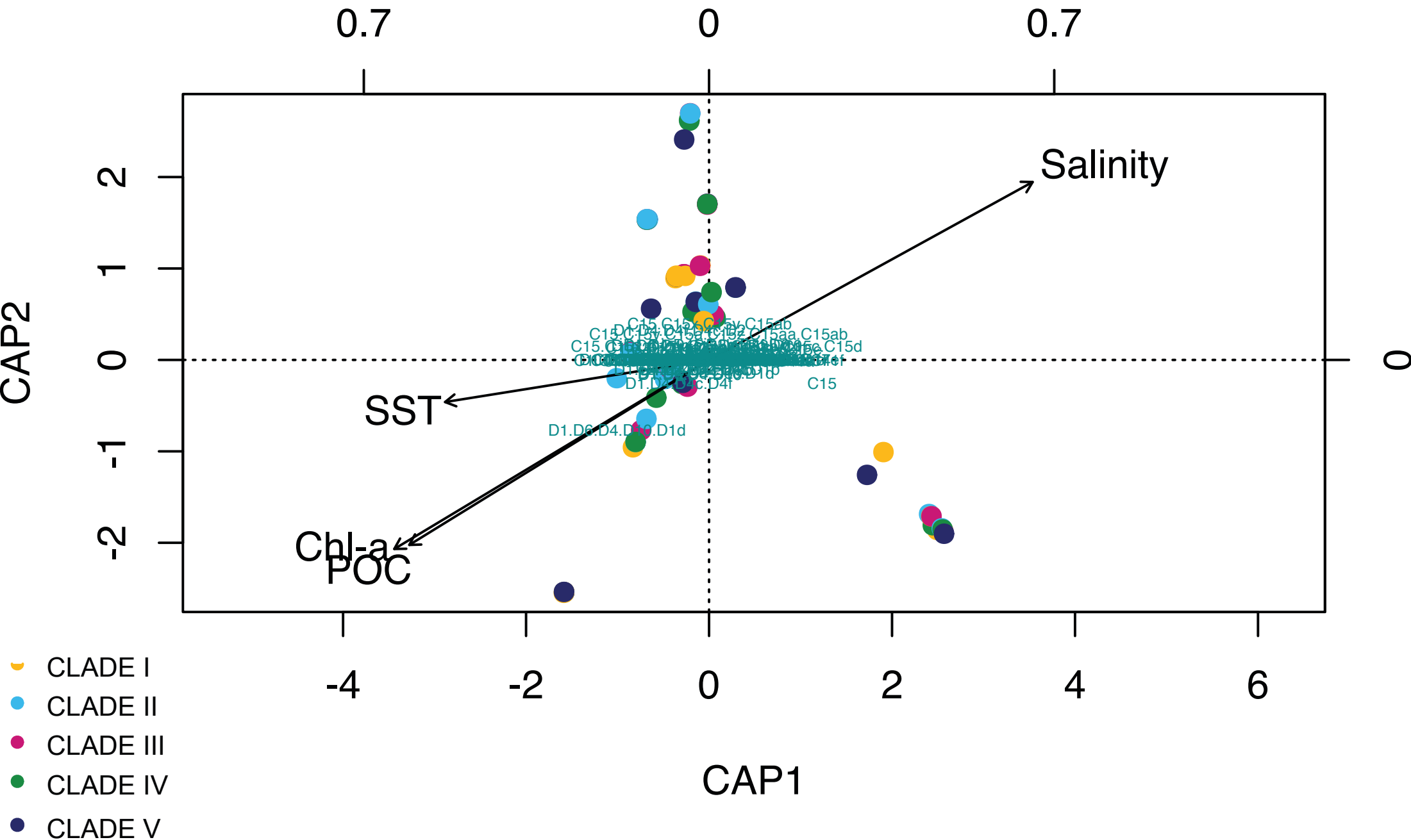
(e) Symbiodiniaceae majority ITS2 seq - *Porites* molecular clade



(g) Symbiodiniaceae ITS2 type profiles - locality



(h) Symbiodiniaceae ITS2 type profile - *Porites* molecular clade



(i) Symbiodiniaceae ITS2 type profiles - *Porites* morphological species

