

Optimizing Top Precision Performance Measure of Content-Based Image Retrieval by Learning Similarity Function

Ru-Ze Liang

King Abdullah University of Science and Technology,
Saudi Arabia
ruzeliang@outlook.com

Lihui Shi

Centerfield Corporation,
Los Angeles,
CA 90245, USA
shilihui@uw.edu

Haoxiang Wang

Department of Electrical
and Computer Engineering,
Cornell University,
Ithaca, NY 14850, USA
wanghaoxiang1102@outlook.com

Jiandong Meng

Shandong Medical College,
Linyi, Shangdong 276000, China
jiandongmeng26@hotmail.com

Jim Jing-Yan Wang

New York University Abu Dhabi,
United Arab Emirates
Provincial Key Laboratory for
Computer Information Processing
Technology, Soochow University,
Suzhou 215006, China
jimjywang@outlook.com

Qingquan Sun

School of Computer Science
and Computer Engineering,
California State University
San Bernardino,
San Bernardino, CA 92407, USA
qsun@csusb.edu

Yi Gu

Travelers Canada,
Toronto, ON, Toronto
ygu023@gmail.com

Abstract—In this paper we study the problem of content-based image retrieval. In this problem, the most popular performance measure is the top precision measure, and the most important component of a retrieval system is the similarity function used to compare a query image against a database image. However, up to now, there is no existing similarity learning method proposed to optimize the top precision measure. To fill this gap, in this paper, we propose a novel similarity learning method to maximize the top precision measure. We model this problem as a minimization problem with an objective function as the combination of the losses of the relevant images ranked behind the top-ranked irrelevant image, and the squared Frobenius norm of the similarity function parameter. This minimization problem is solved as a quadratic programming problem. The experiments over two benchmark data sets show the advantages of the proposed method over other similarity learning methods when the top precision is used as the performance measure.

I. INTRODUCTION

In the problem of content-based image retrieval, the two basic steps of the content-based image retrieval are image visual feature extraction, and the similarity calculation. Recently, the similarity learning problem has been a hot topic in the field of machine learning. This problem tries to learn a parameterized similarity function from a training set, so that a targeted performance can be optimized [1]. To evaluate the performance of a retrieval system, common measures for retrieval performance are taken, including the area under the receiver operating characteristic (ROC) curve, and the top precision value [2], [3], [4]. The top precision measure is defined as the portion of the top-ranked relevant images out of all the relevant database images. The top-ranked relevant

images are further defined as the database images which are ranked before the first ranked irrelevant database image. Top precision is an important performance measure for retrieval problems, however, all the existing similarity learning methods ignore the performance measures, and the resulted similarity function cannot give an optimal performance measure of top precision.

To fill the gap between similarity learning and top precision optimization in the problem of content-based image retrieval, we propose a problem of top precision-optimal similarity learning, together with a corresponding solution using a novel algorithm. Our contributions in this paper are divided into two parts, which are given as followed. The proposed problem is to learn a similarity function to compare a query image against a database image. With the similarity scores between query and database images, when retrieval task is performed, we can obtain a maximum top precision measure. The problem is to adjust the parameters of the similarity function, so that the top precision can be maximized. The proposed novel similarity function learning algorithm is to maximize the top precision over a training set of query images and a database of images. We design the similarity function as a linear function of the two feature vectors of a query image and a database image. To learn the parameter matrix of the similarity function, we propose to maximize the top precision for each query, and parallelly minimize the squared Frobenius norm of the parameter matrix in order to prevent the emergence of the over-fitting problem. The optimization problem is modeled by a hinge loss and solved as a quadratic programming.

The rest parts of this paper are organized as followed. In section II, we introduce the proposed similarity learning algorithm. In section III, we give the experimental results of the proposed method. In section IV, we give the conclusion of this paper with future works.

II. PROPOSED SIMILARITY LEARNING METHOD

We assume we have an image database of m images, $\mathcal{D} = \{\mathbf{x}_1, \dots, \mathbf{x}_m\}$, where $\mathbf{x}_j \in \mathbb{R}^d$ is the feature vector of the j -th database image, a set of query images $Q = \{\mathbf{z}_1, \dots, \mathbf{z}_n\}$, where $\mathbf{z}_i \in \mathbb{R}^d$ is the feature vector of the i -th query image, and a relevance matrix $Y = [y_{ij}] \in \{1, 0\}^{n \times m}$, where $y_{ij} = 1$ if \mathbf{z}_i is relevant to \mathbf{x}_j , and 0 otherwise. We define a similarity function for a query \mathbf{z} and a database image \mathbf{x} parameterize by a matrix $W \in \mathbb{R}^{d \times d}$,

$$s(\mathbf{z}, \mathbf{x}) = \mathbf{z}^\top W \mathbf{x}. \quad (1)$$

The first ranked irrelevant database image of a query \mathbf{z}_i , denoted as *top irrelevant*, is defined as the irrelevant database image with the largest similarity to the query,

$$\mathbf{x}_{\phi_i}, \text{ where } \phi_i = \arg \max_{k: y_{ik}=0} s(\mathbf{z}_i, \mathbf{x}_k). \quad (2)$$

Top precision measure of a query \mathbf{z}_i is defined as the portion of the relevant images ranked before the top irrelevant image,

$$\begin{aligned} \text{Top Precision}(\mathbf{z}_i) \\ = \frac{|\{\mathbf{x}_j : y_{ij} = 1, \text{ and } s(\mathbf{z}_i, \mathbf{x}_j) > s(\mathbf{z}_i, \mathbf{x}_{\phi_i})\}|}{|\{\mathbf{x}_j : y_{ij} = 1\}|}. \end{aligned} \quad (3)$$

To obtain a good performance measure of top precision, we hope that for any pair of query and relevant database image, $(\mathbf{z}_i, \mathbf{x}_j)_{i,j: y_{ij}=1}$, their similarity $s(\mathbf{z}_i, \mathbf{x}_j)$ is larger than the similarity to the top irrelevant database image plus a margin, $s(\mathbf{z}_i, \mathbf{x}_{\phi_i}) + 1$,

$$\begin{aligned} s(\mathbf{z}_i, \mathbf{x}_j) &> \max_{k: y_{ik}=0} s(\mathbf{z}_i, \mathbf{x}_k) + 1, \\ \Rightarrow 0 &> \max_{k: y_{ik}=0} s(\mathbf{z}_i, \mathbf{x}_k) - s(\mathbf{z}_i, \mathbf{x}_j) + 1, \forall i, j : y_{ij} = 1. \end{aligned} \quad (4)$$

To maximize the top precision, we propose to learn the similarity function parameter matrix W by penalizing the case which doesn't satisfies this condition,

$$0 \leq \max_{k: y_{ik}=0} s(\mathbf{z}_i, \mathbf{x}_k) - s(\mathbf{z}_i, \mathbf{x}_j) + 1, \forall i, j : y_{ij} = 1. \quad (5)$$

Thus the loss function for each $(\mathbf{z}_i, \mathbf{x}_j)_{i,j: y_{ij}=1}$ is,

$$\begin{aligned} \ell(\mathbf{z}_i, \mathbf{x}_j; W) &= \max \left(0, \max_{k: y_{ik}=0} s(\mathbf{z}_i, \mathbf{x}_k) - s(\mathbf{z}_i, \mathbf{x}_j) + 1 \right) \\ &= \max \left(0, \max_{k: y_{ik}=0} (\mathbf{z}_i^\top W (\mathbf{x}_k - \mathbf{x}_j) + 1) \right). \end{aligned} \quad (6)$$

The optimization problem is modeled as,

$$\begin{aligned} \min_{W, \xi_{ij} | i,j: y_{ij}=1} & \left\{ \frac{1}{2} \|W\|_F^2 + C \sum_{i,j: y_{ij}=1} \xi_{ij} \right\}, \\ \text{s.t. } & \forall i, j : y_{ij} = 1, \\ & \xi_{ij} \geq 0, \\ & \xi_{ij} \geq \mathbf{z}_i^\top W (\mathbf{x}_k - \mathbf{x}_j) + 1, \end{aligned} \quad (7)$$

where ξ_{ij} is slack variable of (6), $\frac{1}{2} \|W\|_F^2$ is the squared Frobenius norm of W to prevent the over-fitting problem, and C is the tradeoff parameter.

The Lagrange function of (7) is

$$\begin{aligned} \mathcal{L} &= \frac{1}{2} \|W\|_F^2 + C \sum_{i,j: y_{ij}=1} \xi_{ij} \\ &- \sum_{i,j: y_{ij}=1} \alpha_{ij} \xi_{ij} \\ &- \sum_{i,j,k: y_{ij}=1, y_{ik}=0} \beta_{ijk} (\xi_{ij} - \mathbf{z}_i^\top W (\mathbf{x}_k - \mathbf{x}_j) - 1), \end{aligned} \quad (8)$$

where $\alpha_{ij} \geq 0$ is the Lagrange multiplier of the constraint $\xi_{ij} \geq 0$, and $\beta_{ijk} \geq 0$ is the Lagrange multiplier of the constraint $\xi_{ij} \geq \mathbf{z}_i^\top W (\mathbf{x}_k - \mathbf{x}_j) + 1$. The dual form of the optimization problem of (7) is given as follows,

$$\begin{aligned} \max_{\alpha_{ij} | i,j: y_{ij}=1, \beta_{ijk} | i,j,k: y_{ij}=1, y_{ik}=0} & \min_{W, \xi_{ij} | i,j: y_{ij}=1} \mathcal{L} \\ \text{s.t. } & \alpha_{ij} \geq 0, \forall i, j : y_{ij} = 1, \\ & \beta_{ijk} \geq 0, \forall i, j, k : y_{ij} = 1, y_{ik} = 0. \end{aligned} \quad (9)$$

By setting the derivative of \mathcal{L} with regard to ξ_{ij} to zero, we have

$$\begin{aligned} \frac{\partial \mathcal{L}}{\partial \xi_{ij}} &= C - \alpha_{ij} - \sum_{k: y_{ik}=0} \beta_{ijk} = 0, \\ \Rightarrow \alpha_{ij} &= C - \sum_{k: y_{ik}=0} \beta_{ijk} \geq 0, \\ \Rightarrow C &\geq \sum_{k: y_{ik}=0} \beta_{ijk}. \end{aligned} \quad (10)$$

By substituting (10) to \mathcal{L} , we have

$$\begin{aligned} \mathcal{L} &= \frac{1}{2} \|W\|_F^2 - \sum_{i,j,k: y_{ij}=1, y_{ik}=0} \beta_{ijk} \mathbf{z}_i^\top W (\mathbf{x}_j - \mathbf{x}_k) \\ &+ \sum_{i,j,k: y_{ij}=1, y_{ik}=0} \beta_{ijk}. \end{aligned} \quad (11)$$

By setting the derivative of \mathcal{L} with regard to W to zero, we have

$$\begin{aligned} \frac{\partial \mathcal{L}}{\partial W} &= W - \sum_{i,j,k: y_{ij}=1, y_{ik}=0} \beta_{ijk} \mathbf{z}_i (\mathbf{x}_j - \mathbf{x}_k)^\top = 0 \\ \Rightarrow W &= \sum_{i,j,k: y_{ij}=1, y_{ik}=0} \beta_{ijk} \mathbf{z}_i (\mathbf{x}_j - \mathbf{x}_k)^\top. \end{aligned} \quad (12)$$

By substituting W of (12) to \mathcal{L} of (11), we have

$$\mathcal{L} = -\frac{1}{2} \sum_{i,j,k:y_{ij}=1,y_{ik}=0} \sum_{i',j',k':y_{i'j'}=1,y_{i'k'}=0} \beta_{ijk} \beta_{i'j'k'} \mathbf{z}_i^\top \mathbf{z}_{i'} \\ (\mathbf{x}_{j'} - \mathbf{x}_{k'})^\top (\mathbf{x}_j - \mathbf{x}_k) + \sum_{i,j,k:y_{ij}=1,y_{ik}=0} \beta_{ijk}. \quad (13)$$

This is a quadratic function of the multiplier variables, $\beta_{ijk}|_{i,j,k:y_{ij}=1,y_{ik}=0}$. The optimization problem of (9) is transferred to

$$\max_{\beta_{ijk}|_{i,j,k:y_{ij}=1,y_{ik}=0}} \left\{ -\frac{1}{2} \sum_{i,j,k:y_{ij}=1,y_{ik}=0} \sum_{i',j',k':y_{i'j'}=1,y_{i'k'}=0} \beta_{ijk} \beta_{i'j'k'} \mathbf{z}_i^\top \mathbf{z}_{i'} (\mathbf{x}_{j'} - \mathbf{x}_{k'})^\top (\mathbf{x}_j - \mathbf{x}_k) \right. \\ \left. + \sum_{i,j,k:y_{ij}=1,y_{ik}=0} \beta_{ijk} \right\}, \\ \text{s.t. } C \geq \sum_{k:y_{ik}=0} \beta_{ijk}, \text{ and } \beta_{ijk} \geq 0, \\ \forall i, j, k : y_{ij} = 1, y_{ik} = 0. \quad (14)$$

This is a quadratic programming (QP) problem, and we can use a standard active set algorithm to solve this problem. After the $\beta_{ijk}|_{i,j,k:y_{ij}=1,y_{ik}=0}$ are solved, we can recover W from (12).

III. EXPERIMENTS

A. Experimental protocol

In this experiment, we used two benchmark image databases, which are Indoor image database [5], and Caltech256 image database [6]. Then total number of images/number classes of these two databases are 15,620/ 67 and 30,670/ 256. Given a database, we first split it to a set of queries and a set of database images, and these queries are further split into a training set and a test set. We apply the proposed similarity learning algorithm to the training set of queries and the database images to learn the similarity function. Then we use the similarity function to conduct the retrieval task for the test set of queries. The performance is evaluated by top precision measure.

B. Experimental results

We compare our proposed maximum top precision similarity learning method (MTPS), to several state-of-the-art similarity learning methods, online algorithm for scalable image similarity (OASIS) [7], online multiple kernel similarity (OMKS) [8], Boosted distance (BD) [9], stochastic intersection kernel machine (SIKMA) [10], and visuality-preserving distance metric (VPDM) [11]. The results of the comparison over the four benchmark databases are given in Figure 1. It is obvious that the proposed algorithm, MTPS, outperforms the compared similarity learning algorithms over both the two benchmark databases. In the results over the Caltech256, the top precisions

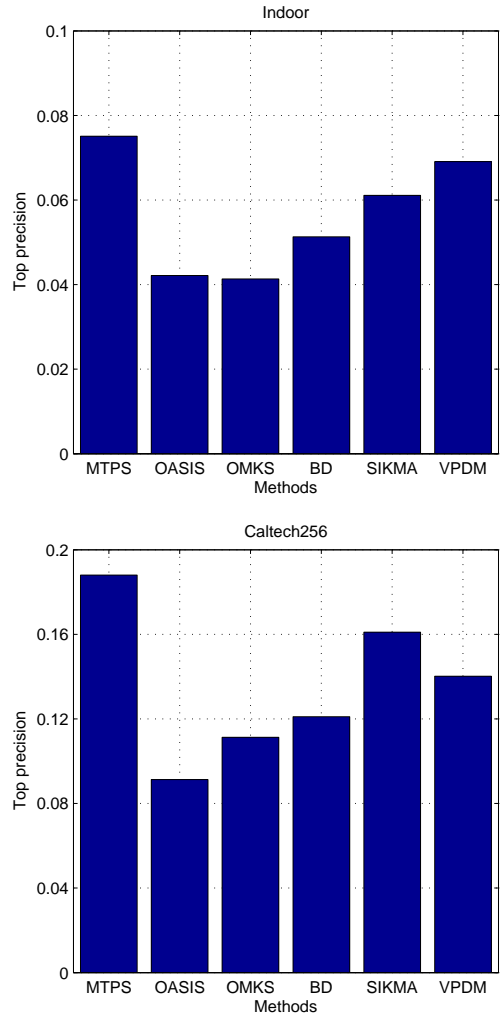


Fig. 1. Comparison of different similarity learning algorithms for retrieval task over two benchmark databases.

of almost all the compared algorithms are below 0.16, while our algorithms, MTPS, have top precisions higher than 0.18.

In addition, we test the running time of the proposed algorithm over the two benchmark databases, displayed in Figure 2. Our proposed algorithm MTPS exhibits shorter running time than others, except for the OASIS and OMKS, suggesting that MTPS provides a comparably efficient way against the problem, and shows a promising improvement space for the future work.

IV. CONCLUSION AND FUTURE WORKS

In this paper we study the problem of similarity learning for content-based image retrieval. The critical novelty of this work is it learns the similarity to maximize the top precision measure over the training set. We model the learning problem as a support top irrelevant database image weighting problem to obtain the optimal similarity function. The experiments over some benchmark databases show its advantages over other similarity learning methods. In the future, we will investigate

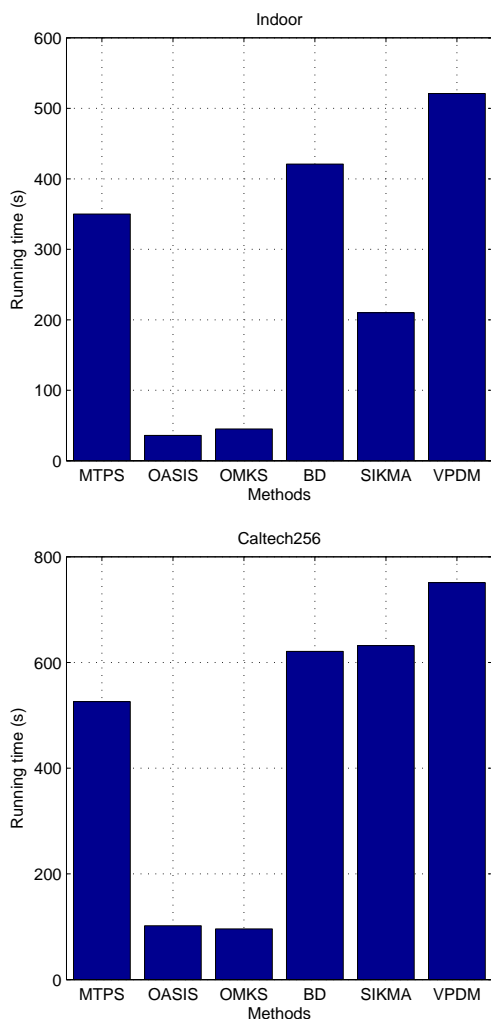


Fig. 2. Running of different similarity learning algorithms over two benchmark databases.

to use some other similarity function as similarity measure instead of linear function, such as Bayesian network [12], [13], [14], and also to develop novel algorithms of other machine learning problems and applications besides similarity learning, to maximize top precision measure, such as importance sampling [15], [16], [17], portfolio choices [18], [19], multimedia technology [20], [21], [22], [23], [24], [25], [26], [27], [28], [29], computational biology [30], [31], [32], [33], [34], big data processing [35], [36], [37], [38], [39], computer vision [40], [41], [42], [43], [44], [45], [46], [47], [48], [49], [50], [51], [52], [53], information security [54], [55], [56], [57], [58], [59], and medical imaging [60], [61], [62], etc.

ACKNOWLEDGEMENTS

The study is supported by a grant from Provincial Key Laboratory for Computer Information Processing Technology, Soochow University, China.

REFERENCES

- [1] C. Kang, S. Liao, Y. He, J. Wang, W. Niu, S. Xiang, and C. Pan, "Cross-modal similarity learning: A low rank bilinear formulation," in *International Conference on Information and Knowledge Management, Proceedings*, vol. 19-23-Oct-2015, 2015, pp. 1251–1260.
- [2] W. Hong and K. Tang, "Convex hull-based multi-objective evolutionary computation for maximizing receiver operating characteristics performance," *Memetic Computing*, vol. 8, no. 1, pp. 35–44, 2016.
- [3] N. Li, R. Jin, and Z.-H. Zhou, "Top rank optimization in linear time," in *Advances in Neural Information Processing Systems*, vol. 2, no. January, 2014.
- [4] X. Fan and K. Tang, "Enhanced maximum auc linear classifier," in *Fuzzy Systems and Knowledge Discovery (FSKD), 2010 Seventh International Conference on*, vol. 4. IEEE, 2010, pp. 1540–1544.
- [5] A. Quattoni and A. Torralba, "Recognizing indoor scenes," in *2009 IEEE Computer Society Conference on Computer Vision and Pattern Recognition Workshops, CVPR Workshops 2009*, 2009, pp. 413–420.
- [6] G. Griffin, A. Holub, and P. Perona, "Caltech-256 object category dataset," 2007.
- [7] G. Chechik, V. Sharma, U. Shalit, and S. Bengio, "Large scale online learning of image similarity through ranking," *Lecture Notes in Computer Science (including subseries Lecture Notes in Artificial Intelligence and Lecture Notes in Bioinformatics)*, vol. 5524 LNCS, pp. 11–14, 2009.
- [8] H. Xia, S. Hoi, R. Jin, and P. Zhao, "Online multiple kernel similarity learning for visual search," *IEEE Transactions on Pattern Analysis and Machine Intelligence*, vol. 36, no. 3, pp. 536–549, 2014.
- [9] J. Yu, J. Amores, N. Sebe, P. Radeva, and Q. Tian, "Distance learning for similarity estimation," *IEEE Transactions on Pattern Analysis and Machine Intelligence*, vol. 30, no. 3, pp. 451–462, 2008.
- [10] G. Wang, D. Hoiem, and D. Forsyth, "Learning image similarity from flickr groups using fast kernel machines," *IEEE Transactions on Pattern Analysis and Machine Intelligence*, vol. 34, no. 11, pp. 2177–2188, 2012.
- [11] L. Yang, R. Jin, L. Mummert, R. Sukthankar, A. Goode, B. Zheng, S. Hoi, and M. Satyanarayanan, "A boosting framework for visually-preserving distance metric learning and its application to medical image retrieval," *IEEE Transactions on Pattern Analysis and Machine Intelligence*, vol. 32, no. 1, pp. 30–44, 2010.
- [12] X. Fan, C. Yuan, and B. Malone, "Tightening bounds for bayesian network structure learning," in *Proceedings of the 28th AAAI Conference on Artificial Intelligence (AAAI-2014)*, vol. 4, 2014, pp. 2439–2445.
- [13] X. Fan, B. Malone, and C. Yuan, "Finding optimal bayesian network structures with constraints learned from data," in *Proceed. of the 30th Conf. on Uncertainty in Artificial Intelligence (UAI-2014)*, 2014, pp. 200–209.
- [14] X. Fan and C. Yuan, "An improved lower bound for bayesian network structure learning," in *Proceedings of the 29th AAAI Conference on Artificial Intelligence (AAAI-2015)*, 2015, pp. 3526–3532.
- [15] L. Shi, C. Zou, Z. Wang, and K. C. Kapur, "A new variable sampling control scheme at fixed times for monitoring the process dispersion," *Quality and Reliability Engineering International*, vol. 25, no. 8, pp. 961–972, 2009.
- [16] L. Shi and K. C. Kapur, "A synthesis of feedback and feedforward control for process improvement under stationary and nonstationary time series disturbance models," *Quality and Reliability Engineering International*, vol. 31, no. 3, pp. 343–354, 2015.
- [17] X. Fan, K. Tang, and T. Weise, "Margin-based over-sampling method for learning from imbalanced datasets," in *Proceedings of the 15th Pacific-Asia Conference on Knowledge Discovery and Data Mining (PAKDD-2011)*. Springer Berlin Heidelberg, 2011, pp. 309–320.
- [18] W. Shen, J. Wang, Y.-G. Jiang, and H. Zha, "Portfolio choices with orthogonal bandit learning," in *Proceedings of the 24th International Conference on Artificial Intelligence*, 2015, pp. 974–980.
- [19] W. Shen and J. Wang, "Portfolio blending via thompson sampling," in *Twenty-Fifth International Joint Conference on Artificial Intelligence*, 2016.
- [20] T.-C. Ma, T.-C. Chen, and L.-G. Chen, "Design and implementation of a low power spike detection processor for 128-channel spike sorting microsystem," in *2014 IEEE International Conference on Acoustics, Speech and Signal Processing (ICASSP)*. IEEE, 2014, pp. 3889–3892.
- [21] X. Xu, A. Shimada, R.-i. Taniguchi, and L. He, "Coupled dictionary learning and feature mapping for cross-modal retrieval," in *Multimedia and Expo (ICME), 2015 IEEE International Conference on*. IEEE, 2015, pp. 1–6.

- [22] F. Lin, J. Wang, N. Zhang, J. Xiahou, and N. McDonald, "Multi-kernel learning for multivariate performance measures optimization," *Neural Computing and Applications*, pp. 1–13, 2016.
- [23] X. Liu, J. Wang, M. Yin, B. Edwards, and P. Xu, "Supervised learning of sparse context reconstruction coefficients for data representation and classification," *Neural Computing and Applications*, pp. 1–9, 2015.
- [24] J. Wang, H. Wang, Y. Zhou, and N. McDonald, "Multiple kernel multivariate performance learning using cutting plane algorithm," in *Systems, Man, and Cybernetics (SMC), 2015 IEEE International Conference on*. IEEE, 2015, pp. 1870–1875.
- [25] J. Wang, Y. Zhou, K. Duan, J. J.-Y. Wang, and H. Bensmail, "Supervised cross-modal factor analysis for multiple modal data classification," in *Systems, Man, and Cybernetics (SMC), 2015 IEEE International Conference on*. IEEE, 2015, pp. 1882–1888.
- [26] H. Wang and J. Wang, "An effective image representation method using kernel classification," in *2014 IEEE 26th International Conference on Tools with Artificial Intelligence (ICTAI 2014)*, 2014, pp. 853–858.
- [27] J. Wang, Y. Zhou, M. Yin, S. Chen, and B. Edwards, "Representing data by sparse combination of contextual data points for classification," in *Advances in Neural Networks—ISNN 2015*. Springer, 2015, pp. 373–381.
- [28] J. Wang, Y. Zhou, H. Wang, X. Yang, F. Yang, and A. Peterson, "Image tag completion by local learning," in *Advances in Neural Networks—ISNN 2015*. Springer, 2015, pp. 232–239.
- [29] J. Xu, J. Yang, N. Huang, C. Uhl, Y. Zhou, and Y. Liu, "Mechanical response of cardiovascular stents under vascular dynamic bending," *Biomedical engineering online*, vol. 15, no. 1, p. 1, 2016.
- [30] S. Wang, Y. Zhou, J. Tan, J. Xu, J. Yang, and Y. Liu, "Computational modeling of magnetic nanoparticle targeting to stent surface under high gradient field," *Computational mechanics*, vol. 53, no. 3, pp. 403–412, 2014.
- [31] Y. Zhou, W. Hu, B. Peng, and Y. Liu, "Biomarker binding on an antibody-functionalized biosensor surface: the influence of surface properties, electric field, and coating density," *The Journal of Physical Chemistry C*, vol. 118, no. 26, pp. 14 586–14 594, 2014.
- [32] Y. Liu, J. Yang, Y. Zhou, and J. Hu, "Structure design of vascular stents," *Multiscale simulations and mechanics of biological materials*, pp. 301–317, 2013.
- [33] B. Peng, Y. Liu, Y. Zhou, L. Yang, G. Zhang, and Y. Liu, "Modeling nanoparticle targeting to a vascular surface in shear flow through diffusive particle dynamics," *Nanoscale research letters*, vol. 10, no. 1, pp. 1–9, 2015.
- [34] Q. Wang, G. Kurillo, F. Offi, and R. Bajcsy, "Remote health coaching system and human motion data analysis for physical therapy with microsoft kinect," *arXiv preprint arXiv:1512.06492*, 2015.
- [35] K. Wang, X. Zhou, K. Qiao, M. Lang, B. McClelland, and I. Raicu, "Towards scalable distributed workload manager with monitoring-based weakly consistent resource stealing," in *Proceedings of the 24rd international symposium on High-performance parallel and distributed computing*. ACM, 2015, pp. 219–222.
- [36] K. Wang, X. Zhou, H. Chen, M. Lang, and I. Raicu, "Next generation job management systems for extreme-scale ensemble computing," in *Proceedings of the 23rd international symposium on High-performance parallel and distributed computing*. ACM, 2014, pp. 111–114.
- [37] D. Zhao, Z. Zhang, X. Zhou, T. Li, K. Wang, D. Kimpe, P. Carns, R. Ross, and I. Raicu, "Fusionfs: Toward supporting data-intensive scientific applications on extreme-scale high-performance computing systems," in *Big Data (Big Data), 2014 IEEE International Conference on*. IEEE, 2014, pp. 61–70.
- [38] K. Wang, X. Zhou, T. Li, D. Zhao, M. Lang, and I. Raicu, "Optimizing load balancing and data-locality with data-aware scheduling," in *Big Data (Big Data), 2014 IEEE International Conference on*. IEEE, 2014, pp. 119–128.
- [39] T. Li, X. Zhou, K. Brandstatter, D. Zhao, K. Wang, A. Rajendran, Z. Zhang, and I. Raicu, "Zht: A light-weight reliable persistent dynamic scalable zero-hop distributed hash table," in *Parallel & Distributed Processing (IPDPS), 2013 IEEE 27th International Symposium on*. IEEE, 2013, pp. 775–787.
- [40] G. Guo and X. Wang, "A study on human age estimation under facial expression changes," in *Computer Vision and Pattern Recognition (CVPR), 2012 IEEE Conference on*. IEEE, 2012, pp. 2547–2553.
- [41] X. Wang, V. Ly, S. Sorensen, and C. Kambhamettu, "Dog breed classification via landmarks," in *2014 IEEE International Conference on Image Processing (ICIP)*. IEEE, 2014, pp. 5237–5241.
- [42] X. Wang and C. Kambhamettu, "Leveraging appearance and geometry for kinship verification," in *2014 IEEE International Conference on Image Processing (ICIP)*. IEEE, 2014, pp. 5017–5021.
- [43] X. Wang, G. Guo, M. Rohith, and C. Kambhamettu, "Leveraging geometry and appearance cues for recognizing family photos," in *Automatic Face and Gesture Recognition (FG), 2015 11th IEEE International Conference and Workshops on*, vol. 1. IEEE, 2015, pp. 1–8.
- [44] M. Ding and G. Fan, "Multilayer joint gait-pose manifolds for human gait motion modeling," *IEEE Transactions on Cybernetics*, vol. 45, no. 11, pp. 2413–2424, 2015.
- [45] —, "Articulated and generalized gaussian kernel correlation for human pose estimation," *IEEE Transactions on Image Processing*, vol. 25, no. 2, pp. 776–789, 2016.
- [46] Q. Wang, "Computational models for multiview dense dynamic scene depth maps," *E-LETTER*, 2015.
- [47] Q. Wang, G. Kurillo, F. Offi, and R. Bajcsy, "Unsupervised temporal segmentation of repetitive human actions based on kinematic modeling and frequency analysis," in *3D Vision (3DV), 2015 International Conference on*. IEEE, 2015, pp. 562–570.
- [48] —, "Evaluation of pose tracking accuracy in the first and second generations of microsoft kinect," in *Healthcare Informatics (ICHI), 2015 International Conference on*. IEEE, 2015, pp. 380–389.
- [49] Y. Yang, H. Zhang, M. Zhang, F. Shen, and X. Li, "Visual coding in a semantic hierarchy," in *Proceedings of the 23rd ACM international conference on Multimedia*. ACM, 2015, pp. 59–68.
- [50] F. Shen, W. Liu, S. Zhang, Y. Yang, and H. T. Shen, "Learning binary codes for maximum inner product search," in *2015 IEEE International Conference on Computer Vision (ICCV)*. IEEE, 2015, pp. 4148–4156.
- [51] D. R. King, W. Li, J. J. Squiers, R. Mohan, E. Sellke, W. Mo, X. Zhang, W. Fan, J. M. DiMaio, and J. E. Thatcher, "Surgical wound debridement sequentially characterized in a porcine burn model with multispectral imaging," *Burns*, vol. 41, no. 7, pp. 1478–1487, 2015.
- [52] W. Li, W. Mo, X. Zhang, J. J. Squiers, Y. Lu, E. W. Sellke, W. Fan, J. M. DiMaio, and J. E. Thatcher, "Outlier detection and removal improves accuracy of machine learning approach to multispectral burn diagnostic imaging," *Journal of biomedical optics*, vol. 20, no. 12, pp. 121 305–121 305, 2015.
- [53] W. Li, W. Mo, X. Zhang, Y. Lu, J. J. Squiers, E. W. Sellke, W. Fan, J. M. DiMaio, and J. E. Thatcher, "Burn injury diagnostic imaging device's accuracy improved by outlier detection and removal," in *SPIE Defense+ Security*. International Society for Optics and Photonics, 2015, pp. 947 206–947 206.
- [54] C.-Y. Wang, D.-Y. Peng, L. Xu, and X.-S. Yi, "Gradual gray-watermark embedding algorithm in the wavelet domain [j]," *Journal of Computer Applications*, vol. 6, p. 025, 2007.
- [55] W. Luo, L. Xu, Z. Zhan, Q. Zheng, and S. Xu, "Federated cloud security architecture for secure and agile clouds," in *High Performance Cloud Auditing and Applications*. Springer New York, 2014, pp. 169–188.
- [56] L. Xu, Z. Zhan, S. Xu, and K. Ye, "An evasion and counter-evasion study in malicious websites detection," in *Communications and Network Security (CNS), 2014 IEEE Conference on*. IEEE, 2014, pp. 265–273.
- [57] —, "Cross-layer detection of malicious websites," in *Proceedings of the third ACM conference on Data and application security and privacy*. ACM, 2013, pp. 141–152.
- [58] S. Xu, W. Lu, L. Xu, and Z. Zhan, "Adaptive epidemic dynamics in networks: Thresholds and control," *ACM Transactions on Autonomous and Adaptive Systems (TAAS)*, vol. 8, no. 4, p. 19, 2014.
- [59] S. Xu, W. Lu, and L. Xu, "Push-and pull-based epidemic spreading in networks: Thresholds and deeper insights," *ACM Transactions on Autonomous and Adaptive Systems (TAAS)*, vol. 7, no. 3, p. 32, 2012.
- [60] C. Hu, X. Hua, P. M. Thompson, G. El Fakhri, and Q. Li, "Inferring sources of dementia progression with network diffusion model," in *International Workshop on Machine Learning in Medical Imaging*. Springer International Publishing, 2014, pp. 42–49.
- [61] C. Hu, L. Cheng, J. Sepulcre, K. A. Johnson, G. E. Fakhri, Y. M. Lu, and Q. Li, "A spectral graph regression model for learning brain connectivity of alzheimers disease," *PLoS one*, vol. 10, no. 5, p. e0128136, 2015.
- [62] C. Hu, J. Sepulcre, K. A. Johnson, G. E. Fakhri, Y. M. Lu, and Q. Li, "Matched signal detection on graphs: Theory and application to brain imaging data classification," *NeuroImage*, vol. 125, pp. 587–600, 2016.