

1. Supporting Information

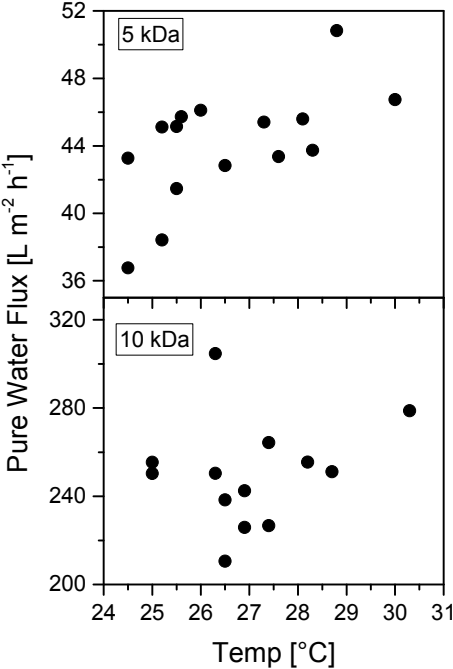


Figure S 1: Variation of pure water flux of 5 kDa and 10 kDa membranes by temperature at 3bar.

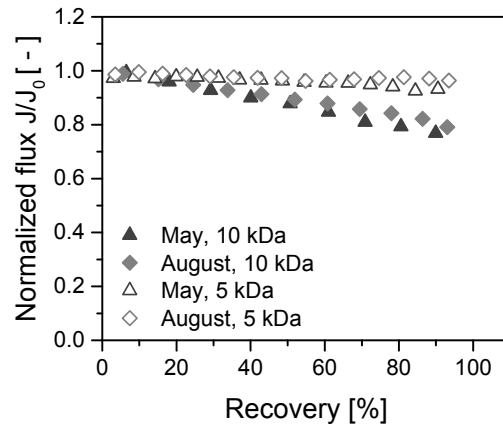


Figure S 2: Normalized permeate flux of May and August samples as a function of recovery (filtration at 3 bar, 27 °C to 31 °C; and 61 min for May, 10 kDa; 71 min for August, 10 kDa; 322 min for May, 5 kDa; and 290 min for August, 5 kDa)

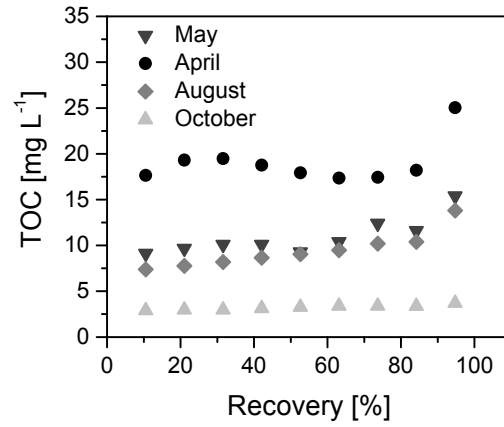


Figure S 3: Permeate TOC concentration of selected samples of April, May, August, and October of 10 kDa membrane as a function of recovery (filtration at 3 bar, 26.5 °C to 31.8 °C, 90 min for April, 61 min for May, 71 min for August, and 56 min for October)

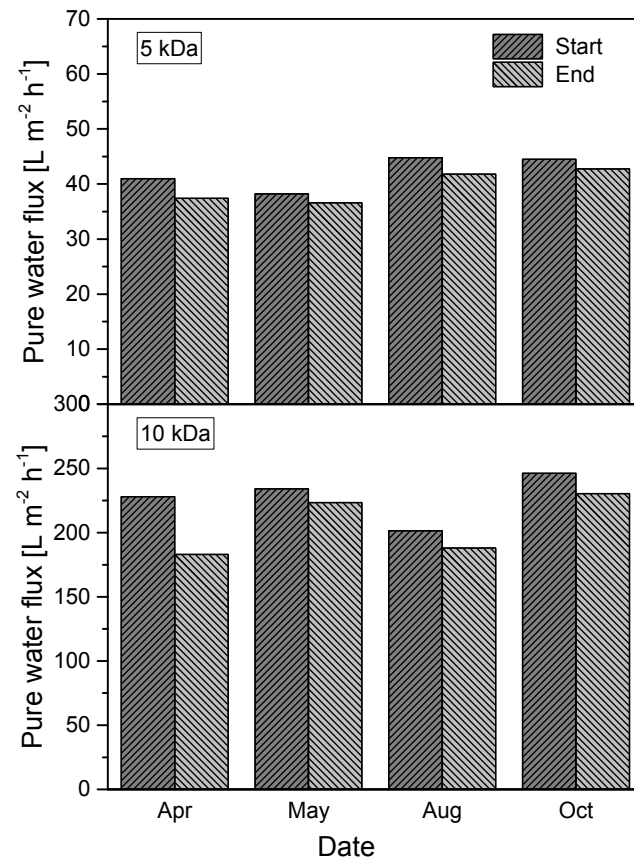


Figure S 4: Pure water flux (normalized to 25 °C (see Eqn. 1)) of 5 kDa (top) and 10 kDa (bottom) membranes before and after filtration of different raw waters (3 bar, 24.5 °C to 30.3 °C)

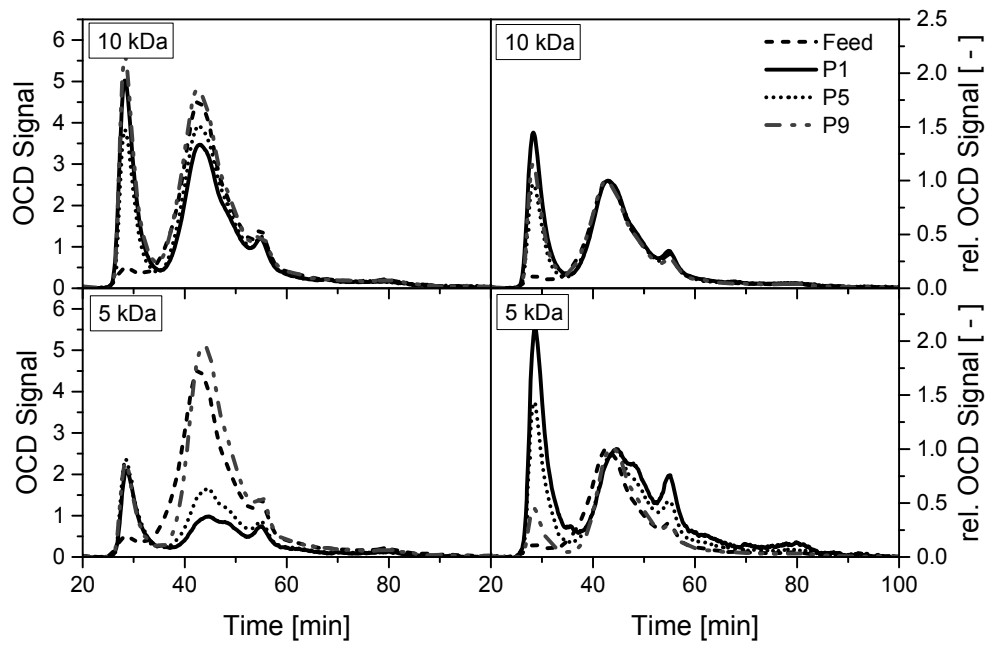


Figure S 5: LC-OCD results of feed and permeates at different recovery of October sample (low TOC) for 10 kDa and 5 kDa membrane; left: OCD chromatograms; right: Normalized OCD chromatograms.

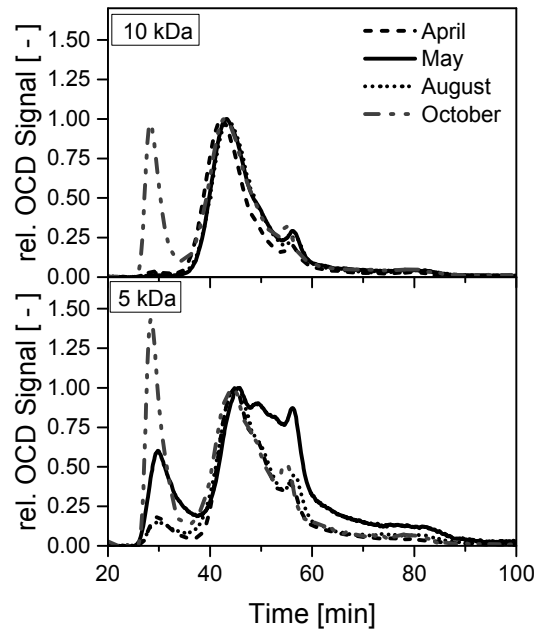


Figure S 6: Normalized LC-OCD chromatograms of permeates from different raw waters at medium recovery ($42\% < R_w < 53\%$)

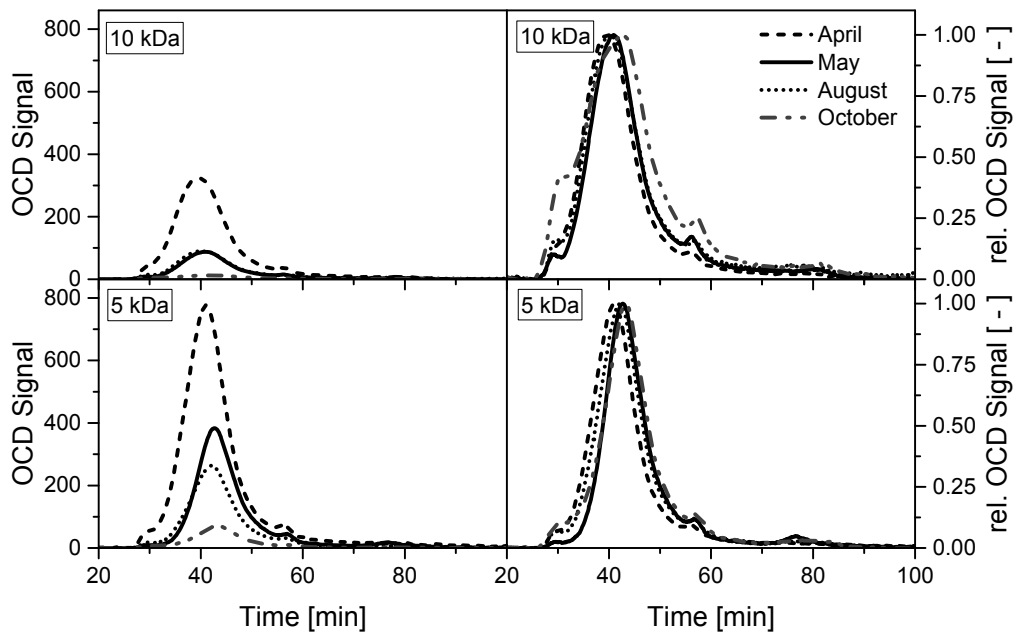


Figure S 7: LC-OCD chromatograms (left) and normalized OCD chromatograms (right) of retentate samples after filtration with 5 and 10 kDa membranes

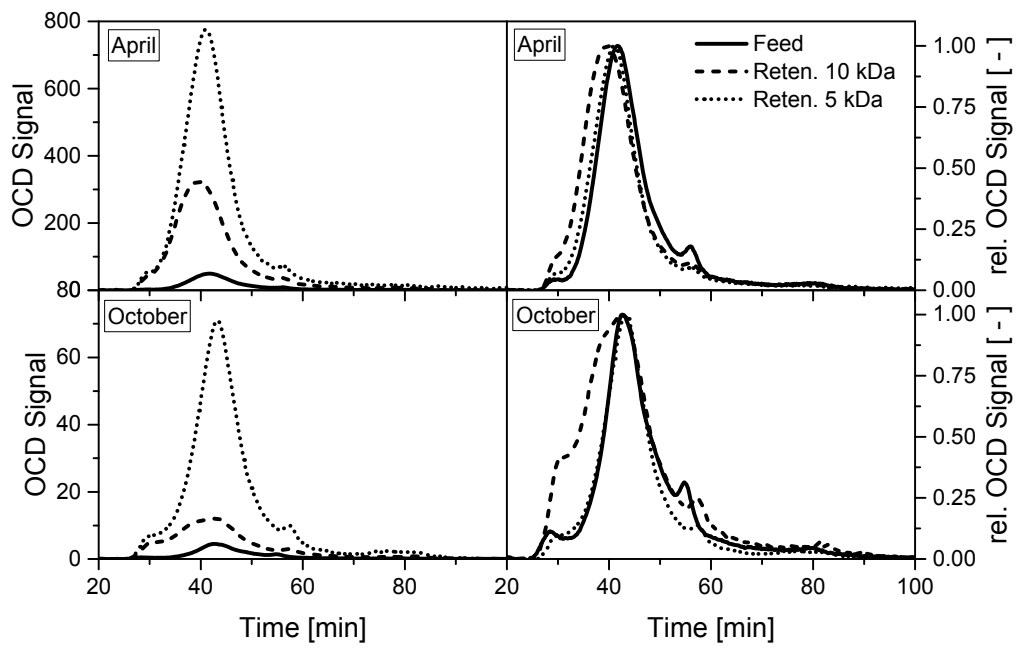


Figure S 8: Comparison of OCD and normalized OCD chromatograms of feed and retentates for April (high TOC) and October (low TOC) samples