

## Supporting Information

### Nanostructured double hydrophobic poly(styrene-*b*-methyl methacrylate) block copolymer membrane manufactured *via* phase inversion technique

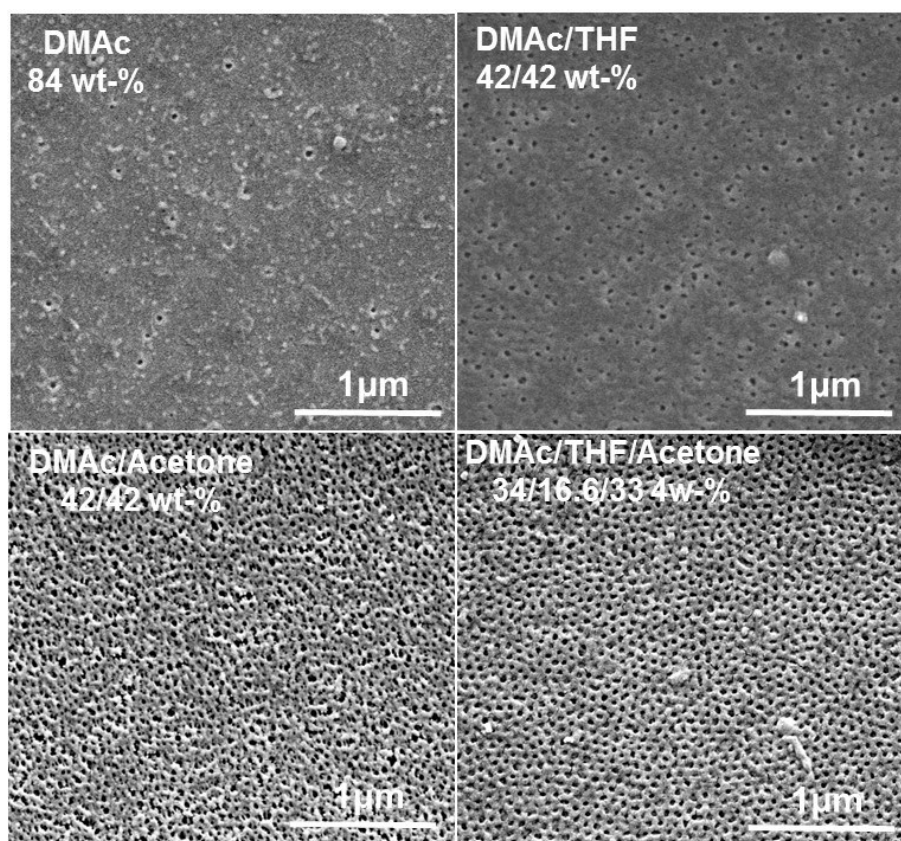
Madhavan Karunakaran\*, Rahul Shevate, and Klaus-Viktor Peinemann

Advanced Membranes and Porous Materials Center,

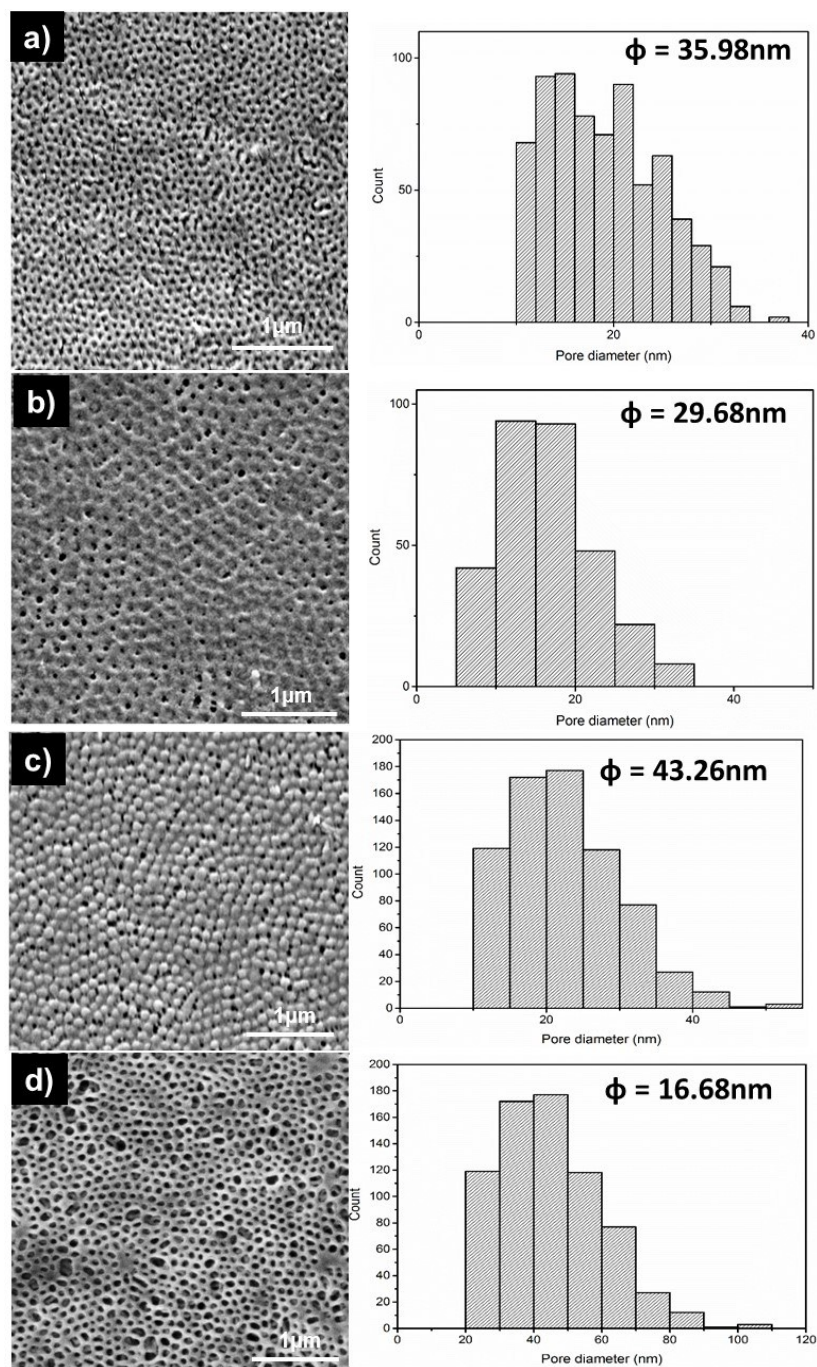
4700 King Abdullah University of Science and Technology (KAUST), Thuwal 23955-6900,

Kingdom of Saudi Arabia

\*Corresponding Author (madhavan.karunakaran@kaust.edu.sa)



**Fig. S1** FESEM images of PS-*b*-PMMA membrane manufactured by phase inversion method using PS<sub>160K</sub>-*b*-PMMA<sub>160K</sub> (16-wt%) in different solvent systems after 10s evaporation time



**Fig. S2** The characteristics of membranes pore structure and their respective micelle diameter (Z-average  $\phi$ )