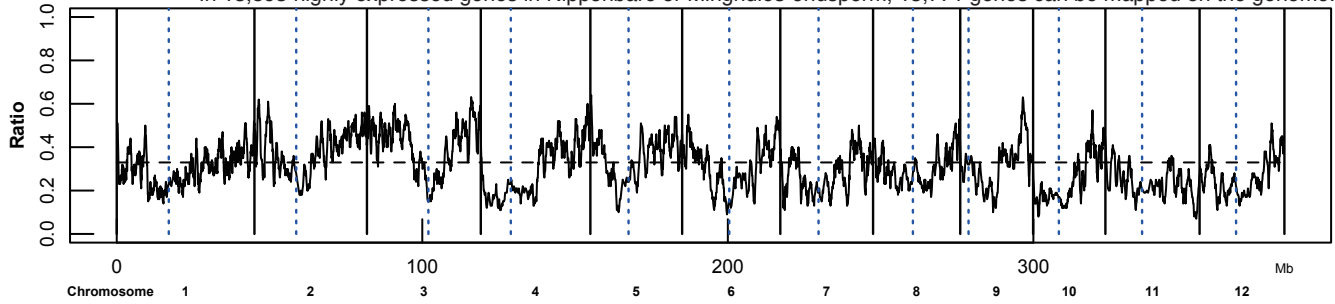


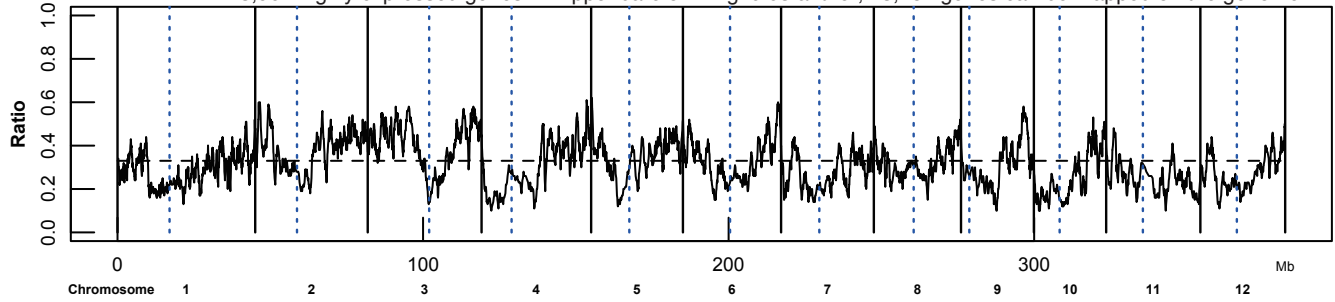
Endosperm

In 13,893 highly expressed genes in Nipponbare or Minghui63 endosperm, 13,771 genes can be mapped on the genome.



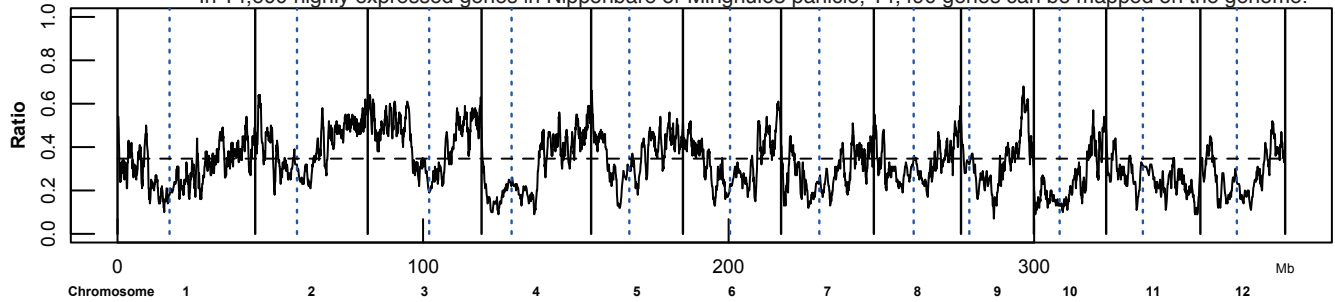
Anther

In 13,901 highly expressed genes in Nipponbare or Minghui63 anther, 13,781 genes can be mapped on the genome.



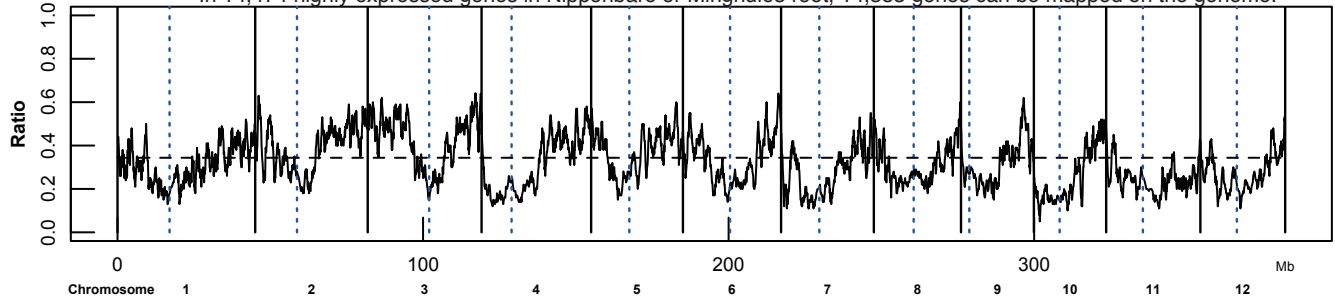
Panicle

In 14,600 highly expressed genes in Nipponbare or Minghui63 panicle, 14,490 genes can be mapped on the genome.



Root

In 14,474 highly expressed genes in Nipponbare or Minghui63 root, 14,353 genes can be mapped on the genome.



Leaf

In 14,486 highly expressed genes in Nipponbare or Minghui63 leaf, 14,363 genes can be mapped on the genome.

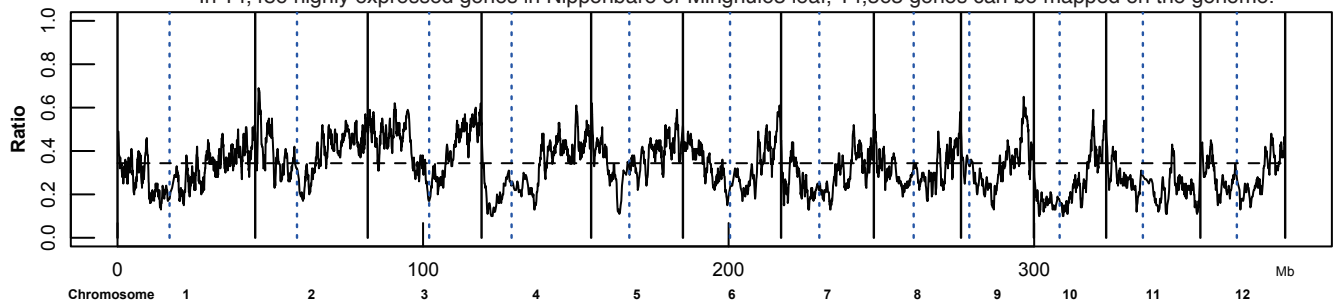


Figure S5. Ratio distribution of Nipponbare or Minghui63 highly expressed genes to every 100 mapped genes.