

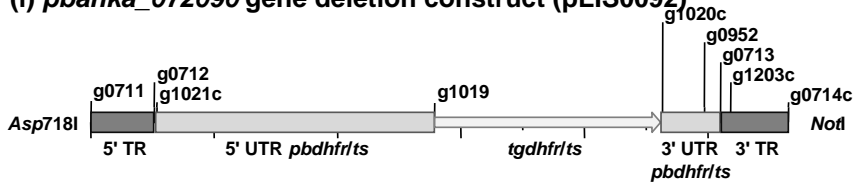
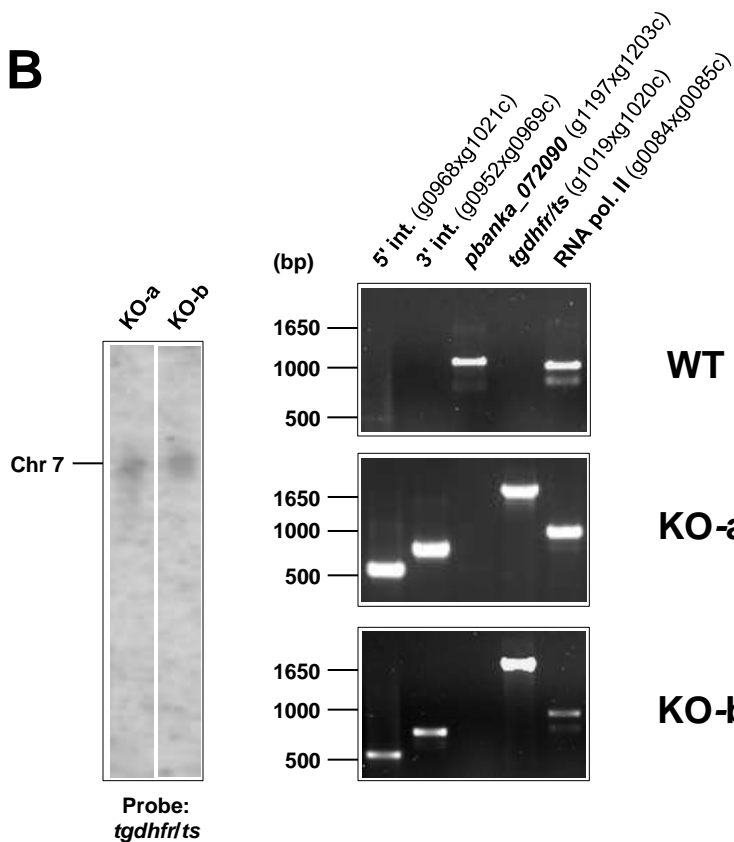
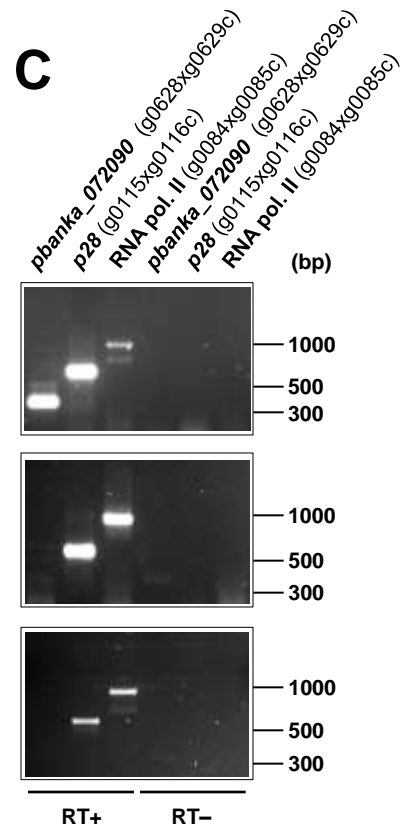
A**(i) *pbanka_072090* gene deletion construct (pLIS0092)****(ii) Gene locus****(iii) KO locus****B****C**

Figure S1 – Generation and genotyping of *pbanka_072090* knock-out (KO) parasite lines. (A) *pbanka_072090* gene deletion construct pLIS0092 (i) was obtained by cloning 5' and 3' targeting regions (TR) upstream and downstream of the *Toxoplasma gondii dhfrlts* selectable marker cassette, respectively. The *tgdhfrlts* gene is under the control of *P. berghei dhfrlts* 5' and 3' UTRs. The construct was integrated into the *pbanka_072090* locus (ii) of Fluo-frmg WT line by double homologous recombination, resulting in the complete deletion of the ORF in the null mutant (iii). **(B)** Correct deletion of *pbanka_072090* was shown by Southern analysis of separated chromosomes (left) and diagnostic PCR analyses (right). Hybridisation of separated chromosomes with a probe against the *tgdhfrlts* selectable marker cassette recognised integrated pLIS0092 into chromosome 7. PCR analyses confirm 5' and 3' integration (int.) of pLIS0092, absence of the ORF and presence of the *tgdhfrlts* gene. **(C)** Absence of *pbanka_072090* mRNA was confirmed by RT-PCR. *p28* and RNA polymerase II serve as control genes.