

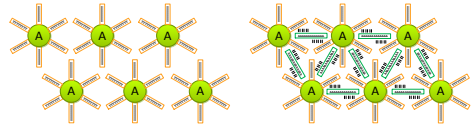
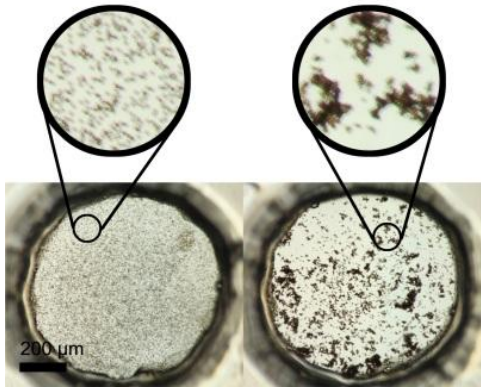


# DNA & PROTEIN DETECTION BASED ON MICROBEAD AGGLUTINATION

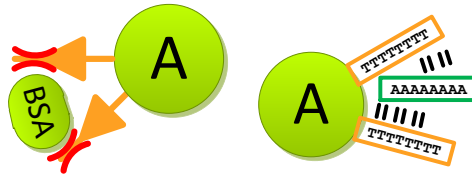


Rimantas Kodzius, David Castro, Sumanpreet Chhina,  
Ash M. Parameswaran and Ian G. Foulds

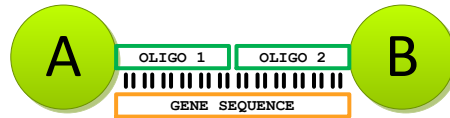
## Agglutination example



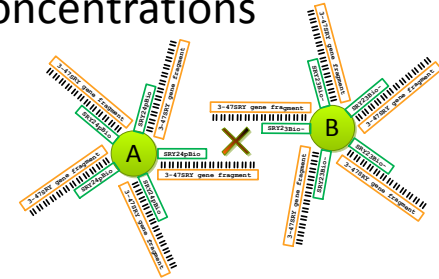
## Problem 1: Self-termination of protein and DNA assay



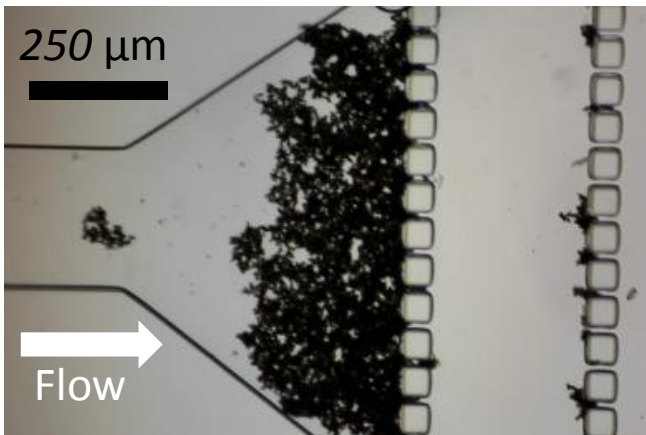
## Solution: Three-component assay, better sensitivity



## Problem 2: Saturation at high concentrations



## Solution: Stepped process, wider detection range



*Agglutinated beads in channel*

*Agglutination is obtained rapidly (5 minutes) and at room temperature.*

